

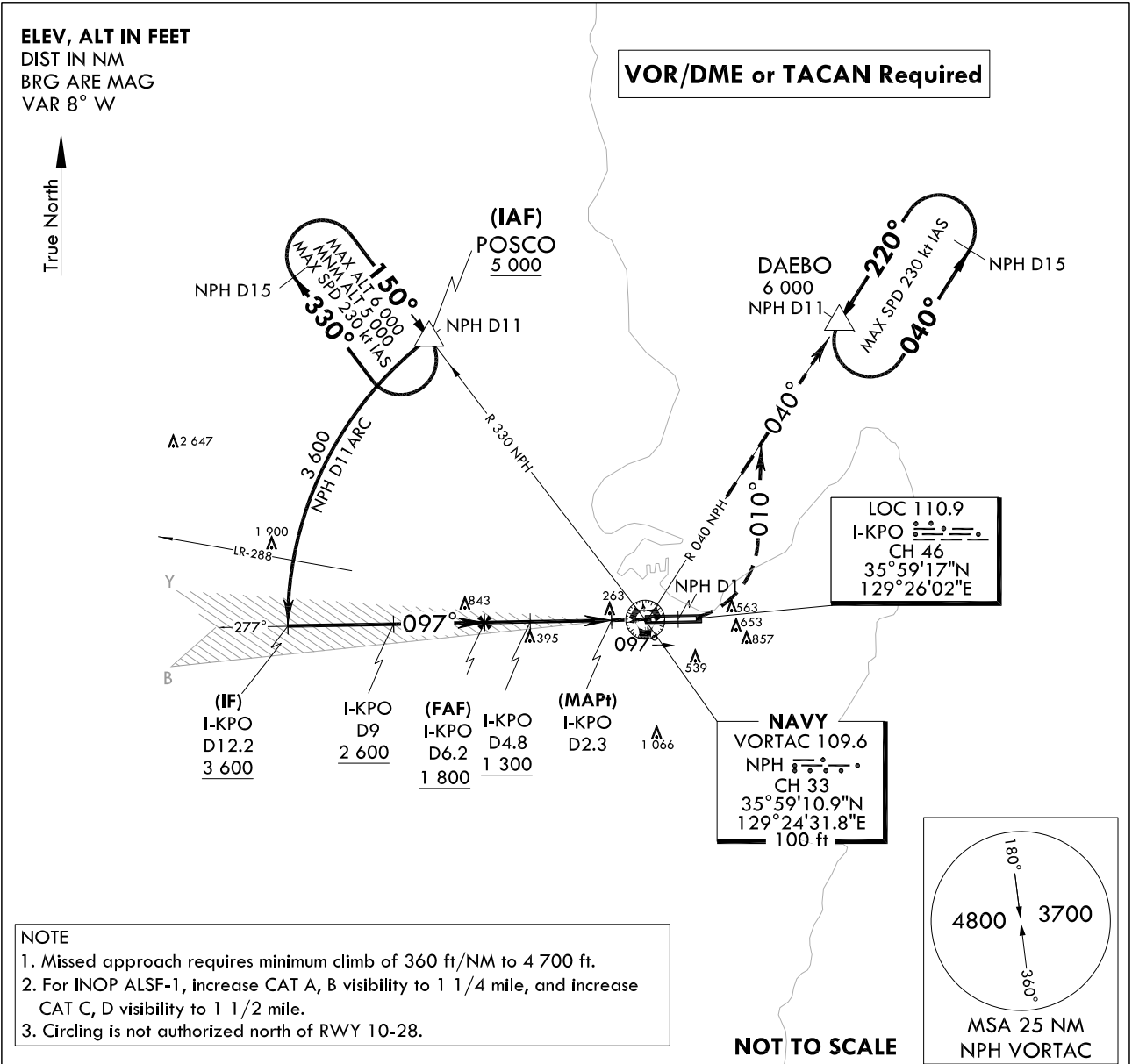
INSTRUMENT APPROACH CHART

AERODROME ELVE 76 ft
 HEIGHTS RELATED TO
 THR RWY 10 - ELEV 76 ft
 HIGHEST ELEV TDZ 76 ft

POHANG APP	124.25	120.2
POHANG TWR	232.4	236.6
	118.05	308.50

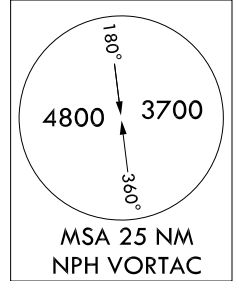
POHANG/Pohang Gyeongju(RKTH)
LOC/DME RWY 10

Note : Approach and circle-to-land under U.S TERPS.



NOTE
 1. Missed approach requires minimum climb of 360 ft/NM to 4 700 ft.
 2. For INOP ALSF-1, increase CAT A, B visibility to 1 1/4 mile, and increase CAT C, D visibility to 1 1/2 mile.
 3. Circling is not authorized north of RWY 10-28.

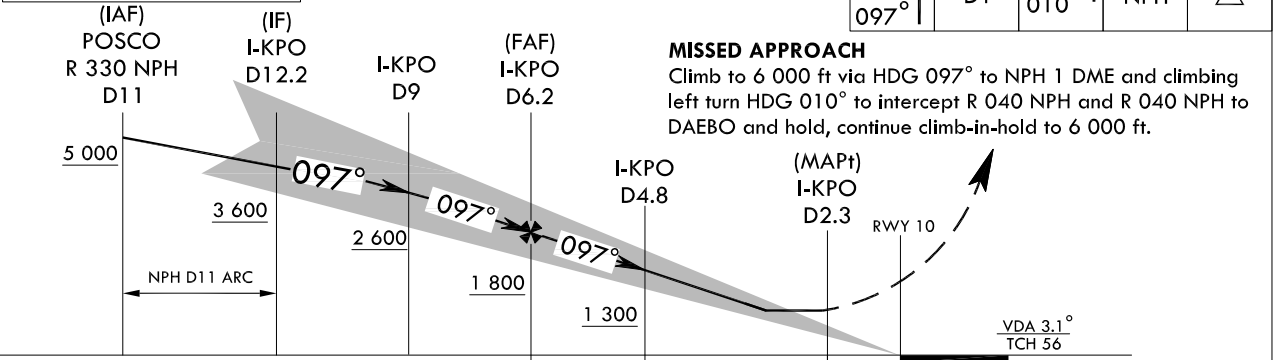
NOT TO SCALE



TRANSITION ALT 14 000
 TRANSITION LVL FL 140

Note : VGSI and descent angles not coincident (VGSI Angle 3.00° TCH 49).

6 000	NHP D1	HDG 010°	R 040 NPH	DAEBO
HDG 097°				



Note : Use I-KPO DME when on the localizer course.

CATEGORY	A	B	C	D
S-LOC 10	600-3/4 524(600-3/4)		600-1 524(600 - 1)	
CIRCLING	940-1 5/8 864(900-1 5/8)	1 000-1 5/8 924(1 000- 1 5/8)	1 160-3 1 084(1 100-3)	1 440-3 1 364(1 400-3)

Change : Information of aerodrome name(Pohang → Pohang Gyeongju).

INTENTIONALLY

LEFT

BLANK

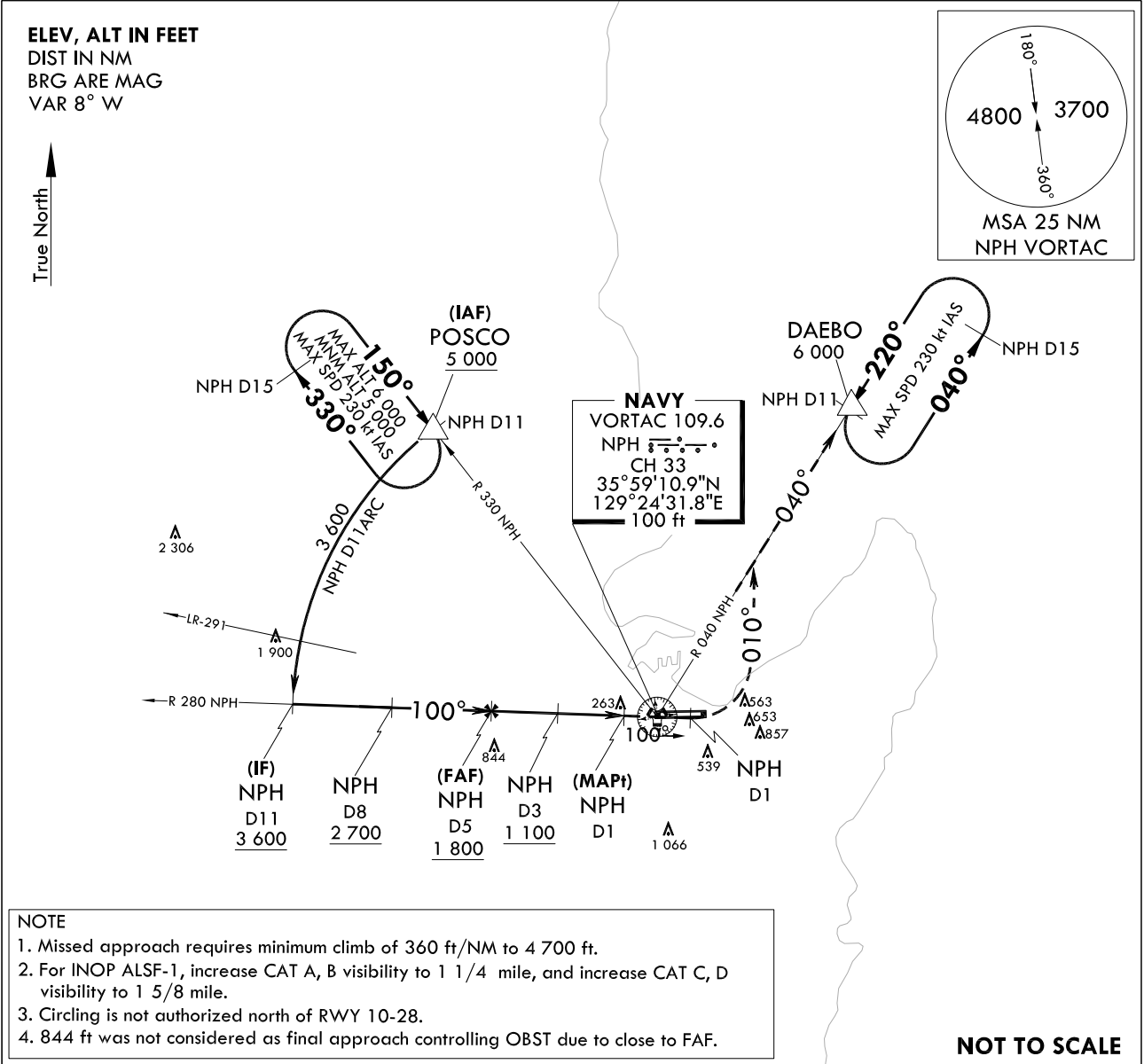
**INSTRUMENT
APPROACH
CHART**

AERODROME ELVE 76 ft
HEIGHTS RELATED TO
THR RWY 10 - ELEV 76 ft
HIGHEST ELEV TDZ 76 ft

POHANG APP	124.25	120.2
POHANG TWR	118.05	236.6
	308.50	

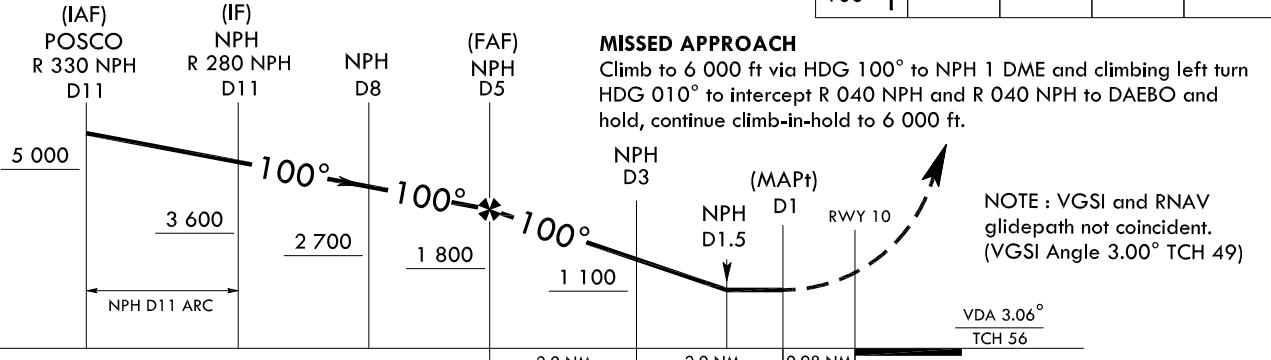
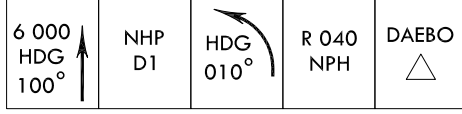
POHANG/Pohang Gyeongju(RKTH)
VOR/DME or TACAN
RWY 10

Note : Approach and circle-to-land under U.S TERPS.



- NOTE**
1. Missed approach requires minimum climb of 360 ft/NM to 4 700 ft.
 2. For INOP ALSF-1, increase CAT A, B visibility to 1 1/4 mile, and increase CAT C, D visibility to 1 5/8 mile.
 3. Circling is not authorized north of RWY 10-28.
 4. 844 ft was not considered as final approach controlling OBST due to close to FAF.

TRANSITION ALT 14 000
TRANSITION LVL FL 140



CATEGORY	A	B	C	D
S-VORTAC 28	620 - 3/4	544(600 - 3/4)	620 - 1 1/8	544(600 - 1 1/8)
CIRCLING	940 - 1 1/4 864(900 1 1/4)	1 000 - 1 1/4 924(1 000 - 1 1/4)	1 160 - 3 1 084(1 100 - 3)	1 440 - 3 1 364(1 400 - 3)

Change : Information of aerodrome name(Pohang → Pohang Gyeongju).

INTENTIONALLY

LEFT

BLANK

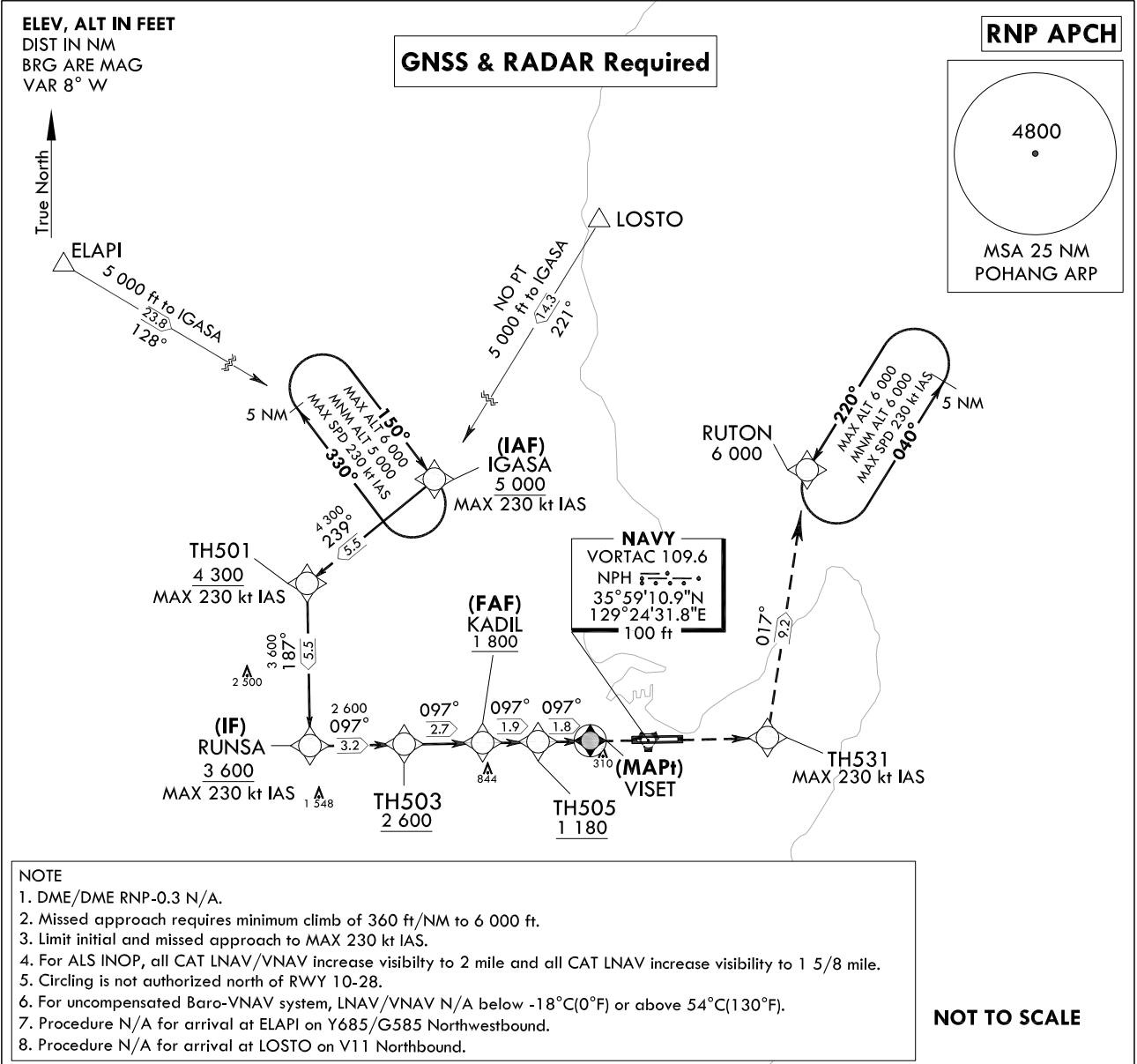
**INSTRUMENT
APPROACH
CHART**

AERODROME ELVE 76 ft
HEIGHTS RELATED TO
THR RWY 10 - ELEV 76 ft
HIGHEST ELEV TDZ 76 ft

POHANG APP	124.25	120.2
	232.4	
POHANG TWR	118.05	236.6
	308.50	

POHANG/Pohang Gyeongju(RKTH)
RNP Y RWY 10

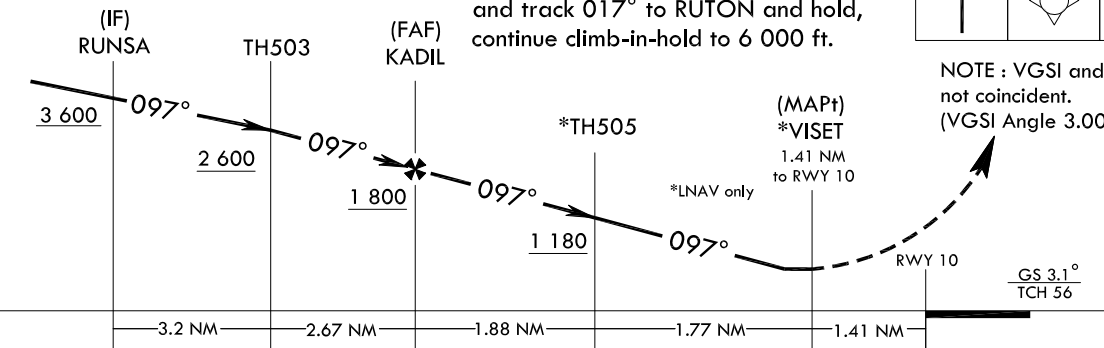
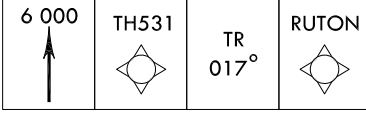
Note : Approach under U.S TERPS.



- NOTE**
1. DME/DME RNP-0.3 N/A.
 2. Missed approach requires minimum climb of 360 ft/NM to 6 000 ft.
 3. Limit initial and missed approach to MAX 230 kt IAS.
 4. For ALS INOP, all CAT LNAV/VNAV increase visibility to 2 mile and all CAT LNAV increase visibility to 1 5/8 mile.
 5. Circling is not authorized north of RWY 10-28.
 6. For uncompensated Baro-VNAV system, LNAV/VNAV N/A below -18°C(0°F) or above 54°C(130°F).
 7. Procedure N/A for arrival at ELAPI on Y685/G585 Northwestbound.
 8. Procedure N/A for arrival at LOSTO on V11 Northbound.

TRANSITION ALT 14 000
TRANSITION LVL FL 140

MISSED APPROACH
Climb to 6 000 ft via direct to TH531 and track 017° to RUTON and hold, continue climb-in-hold to 6 000 ft.



CATEGORY	A	B	C	D
LNAV/VNAV DA		696 - 1 5/8	620(700 - 1 5/8)	
LNAV MDA		620 - 1 1/4	544(600 - 1 1/4)	
CIRCLING	940 - 1 5/8 864(900 - 1 5/8)	1 000 - 1 5/8 924(1 000 - 1 5/8)	1 160 - 3 1 084(1 100 - 3)	1 440 - 3 1 364(1 400 - 3)

Change : Information of aerodrome name(Pohang → Pohang Gyeongju).

POHANG/Pohang Gyeongju(RKTH)
RNP Y RWY 10

AERONAUTICAL DATA TURBULATION

Instrument Approach Procedure Coding Tables

Feeder Route - via ELAPI to IGASA(IAF)

Serial Number	Path Descriptor	Waypoint Identifier	Fly-over	Course/Track °M(°T)	Distance (NM)	Turn direction	Altitude (ft)	Speed (kt)	Coordinates	VPA/TCH	Navigation specification	Remarks
001	-	ELAPI	-	-	-	-	-	-	36°20'14.1"N 128°50'50.9"E	-	RNAV 1	-
002	TF	IGASA	-	128(120.2)	23.8	-	+5 000	-230	36°08'10.4"N 129°16'16.6"E	-	RNAV 1	IAF

Feeder Route - via LOSTO to IGASA(IAF)

Serial Number	Path Descriptor	Waypoint Identifier	Fly-over	Course/Track °M(°T)	Distance (NM)	Turn direction	Altitude (ft)	Speed (kt)	Coordinates	VPA/TCH	Navigation specification	Remarks
001	-	LOSTO	-	-	-	-	-	-	36°20'15.8"N 129°25'48.3"E	-	RNAV 1	-
002	TF	IGASA	-	221(212.6)	14.3	-	+5 000	-230	36°08'10.4"N 129°16'16.6"E	-	RNAV 1	IAF

RNP Y RWY 10 - IGASA to RUTON

Serial Number	Path Descriptor	Waypoint Identifier	Fly-over	Course/Track °M(°T)	Distance (NM)	Turn direction	Altitude (ft)	Speed (kt)	Coordinates	VPA/TCH	Navigation specification	Remarks
001	-	IGASA	-	-	-	-	+5 000	-230	36°08'10.4"N 129°16'16.6"E	-	RNAV 1	IAF Bank Angle 23°
002	TF	TH501	-	239(230.8)	5.5	-	+4 300	-230	36°04'38.0"N 129°10'55.6"E	-	RNAV 1	Bank Angle 23°
003	TF	RUNSA	-	187(179.1)	5.5	-	+3 600	-230	35°59'06.5"N 129°11'02.0"E	-	RNAV 1	IF Bank Angle 23°
004	TF	TH503	-	097(089.1)	3.2	-	+2 600	-	35°59'09.5"N 129°14'58.6"E	-	RNAV 1	-
005	TF	KADIL	-	097(089.1)	2.7	-	+1 800	-	35°59'11.9"N 129°18'15.9"E	-	RNP APCH	FAF
006	TF	TH505	-	097(089.2)	1.9	-	+1 180	-	35°59'13.5"N 129°20'35.2"E	-	RNP APCH	(LNAV only)
007	TF	VISET	Y	097(089.2)	1.8	-	+620	-	35°59'15.0"N 129°22'46.2"E	-	RNP APCH	MAP(LNAV only)
008	DF	TH531	-	-	-	-	-	-230	35°59'19.7"N 129°30'11.8"E	-	RNAV 1	CG 360 ft/NM to 6 000 ft
009	TF	RUTON	-	017(008.7)	9.2	-	6 000	-230	36°08'26.0"N 129°31'55.0"E	-	RNAV 1	-
010	HM	RUTON	-	040	-	L	6 000	-230	36°08'26.0"N 129°31'55.0"E	-	RNAV 1	-

HOLDING PROCEDURE

Holding Identification	Path Descriptor	Waypoint Identifier	Fly-over	Course/Track °M(°T)	Distance (NM)	Turn direction	Altitude (ft)	Speed (kt)	Coordinates	VPA/TCH	Navigation specification	Remarks
RNP Y RWY 10	HM	IGASA	-	150	5	R	-6 000 +5 000	-230	36°08'10.4"N 129°16'16.6"E	-	RNAV 1	Inbound Leg
	HM	RUTON	-	220	5	L	6 000	-230	36°08'26.0"N 129°31'55.0"E	-	RNAV 1	Inbound Leg

Change : Information of aerodrome name(Pohang → Pohang Gyeongju).

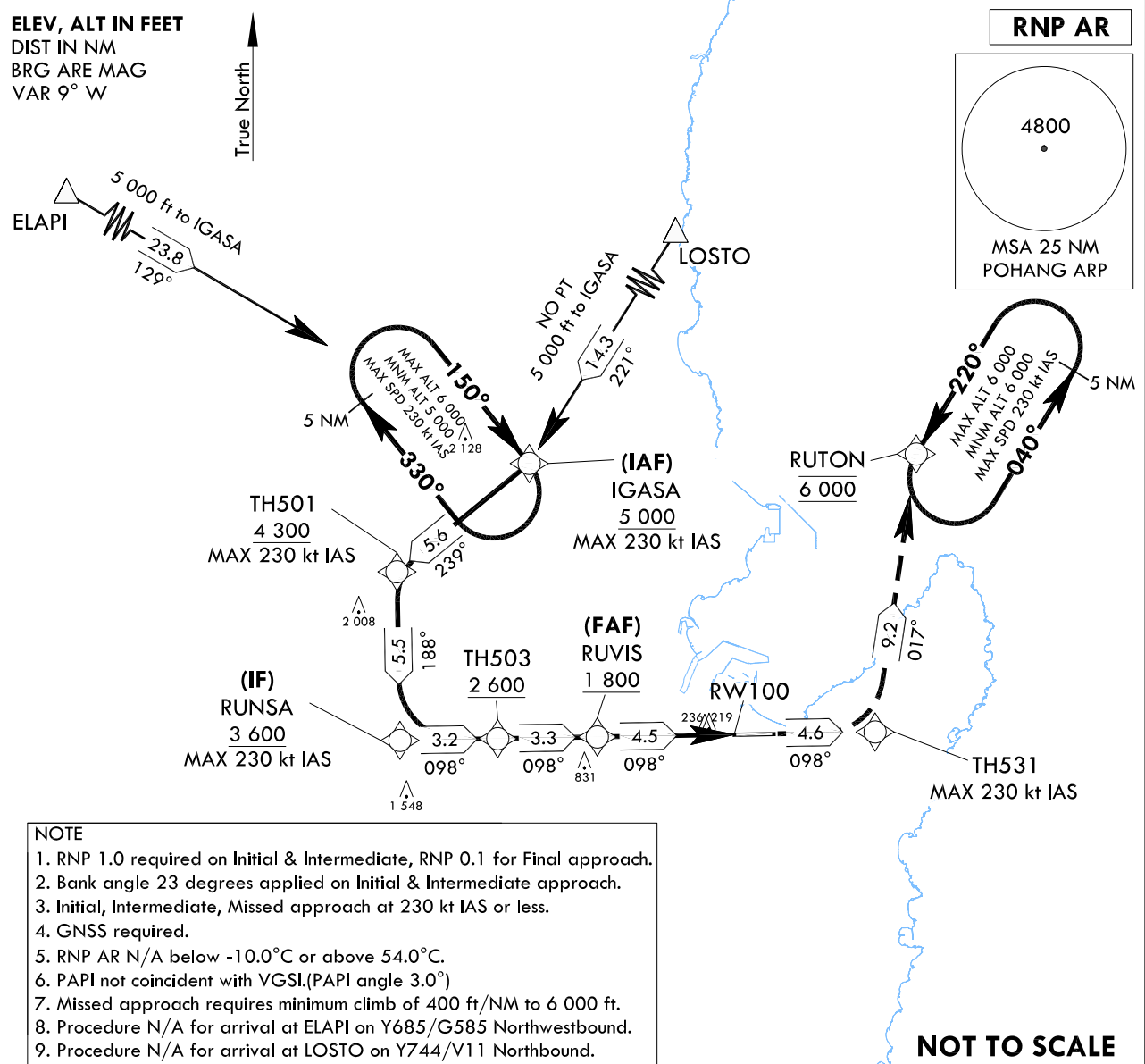
**INSTRUMENT
APPROACH
CHART**

AERODROME ELVE 76 ft
HEIGHTS RELATED TO
THR RWY 10 - ELEV 76 ft
HIGHEST ELEV TDZ 76 ft

POHANG APP	124.25	120.2
POHANG TWR	118.05	236.6
	308.50	

POHANG/Pohang Gyeongju(RKTH)
RNP Z RWY 10(AR)

Note : Approach under U.S TERPS.

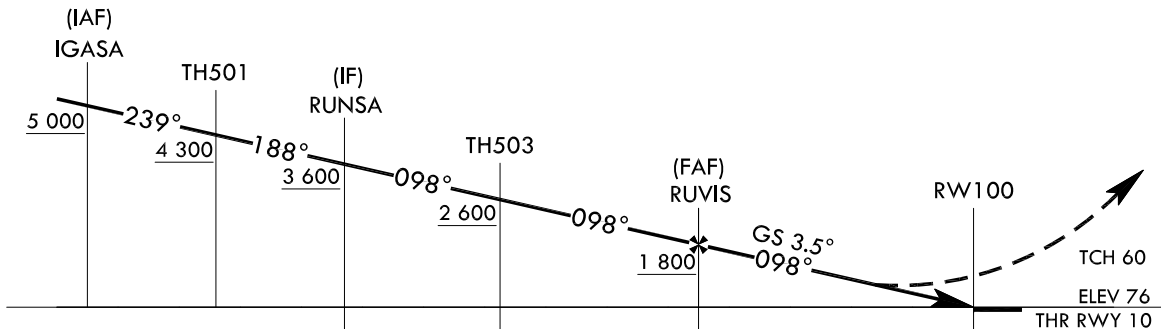
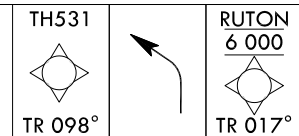


- NOTE**
1. RNP 1.0 required on Initial & Intermediate, RNP 0.1 for Final approach.
 2. Bank angle 23 degrees applied on Initial & Intermediate approach.
 3. Initial, Intermediate, Missed approach at 230 kt IAS or less.
 4. GNSS required.
 5. RNP AR N/A below -10.0°C or above 54.0°C.
 6. PAPI not coincident with VGSI.(PAPI angle 3.0°)
 7. Missed approach requires minimum climb of 400 ft/NM to 6 000 ft.
 8. Procedure N/A for arrival at ELAPI on Y685/G585 Northwestbound.
 9. Procedure N/A for arrival at LOSTO on Y744/V11 Northbound.

MISSED APPROACH

Climb to 6 000 ft on track 098° to TH531, then track 017° to RUTON and hold.

TRANSITION ALT 14 000
TRANSITION LVL FL 140



CATEGORY		A	B	C	D
RNP 0.1	FULL	512-1 436(500-1)			N/A
	ALS INOP	512-1 1/4 436(500-1 1/4)			N/A

Change : Establishment of fly-over point(RW100).

POHANG/Pohang Gyeongju(RKTH)
RNP Z RWY 10(AR)

AERONAUTICAL DATA TABULATION

Instrument Approach Procedure Coding Tables

Feeder Route - via ELAPI to IGASA(IAF)

Serial Number	Path Descriptor	Waypoint Identifier	Fly-over	Course/Track °M(°T)	Distance (NM)	Turn direction	Altitude (ft)	Speed (kt)	Coordinates	VPA/TCH	Navigation specification	Remarks
001	TF	ELPAI	-	-	-	-	-	-	36°20'14.1"N 128°50'50.9"E	-	RNAV 1	FEEDER ROUTE
002	HM	IGASA	-	129(120.2)	23.8	-	+5 000	-230	36°08'10.4"N 129°16'16.6"E	-	RNP 1	HOLDING 5 NM LEG

Feeder Route - via LOSTO to IGASA(IAF)

Serial Number	Path Descriptor	Waypoint Identifier	Fly-over	Course/Track °M(°T)	Distance (NM)	Turn direction	Altitude (ft)	Speed (kt)	Coordinates	VPA/TCH	Navigation specification	Remarks
001	TF	LOSTO	-	-	-	-	-	-	36°20'15.8"N 129°25'48.3"E	-	RNAV 1	FEEDER ROUTE
002	HM	IGASA	-	221(212.6)	14.3	-	+5 000	-230	36°08'10.4"N 129°16'16.6"E	-	RNP 1	HOLDING 5 NM LEG

RNP Z RWY 10(AR) - via IGASA to RUTON

Serial Number	Path Descriptor	Waypoint Identifier	Fly-over	Course/Track °M(°T)	Distance (NM)	Turn direction	Altitude (ft)	Speed (kt)	Coordinates	VPA/TCH	Navigation specification	Remarks
001	IF	IGASA	-	-	-	-	+5 000	-230	36°08'10.4"N 129°16'16.6"E	-	RNP 1	IAF
002	TF	TH501	-	239(230.8)	5.6	-	+4 300	-230	36°04'38.0"N 129°10'55.6"E	-	RNP 1	Bank angle 23°
003	TF	RUNSA	-	188(179.1)	5.5	-	+3 600	-230	35°59'06.5"N 129°11'02.0"E	-	RNP 1	IF Bank angle 23°
004	TF	TH503	-	098(089.1)	3.2	-	+2 600	-230	35°59'09.5"N 129°14'58.6"E	-	RNP 1	-
005	TF	RUVIS	-	098(089.1)	3.3	-	+1 800	-	35°59'12.4"N 129°18'59.7"E	-	RNP 0.1	FAF
006	TF	RW100	Y	098(089.2)	4.5	-	-	-	35°59'16.12"N 129°24'30.77"E	-3.5/60	RNP 0.1	-
007	TF	TH531	-	098(089.2)	4.6	-	-	-230	35°59'19.7"N 129°30'11.8"E	-	RNP 1	-
008	TF	RUTON	-	017(008.7)	9.2	-	@6 000	-230	36°08'26.0"N 129°31'55.0"E	-	RNP 1	-
009	HM	RUTON	-	220(211.5)	-	L	@6 000	-230	36°08'26.0"N 129°31'55.0"E	-	RNP 1	HOLDING 5 NM LEG

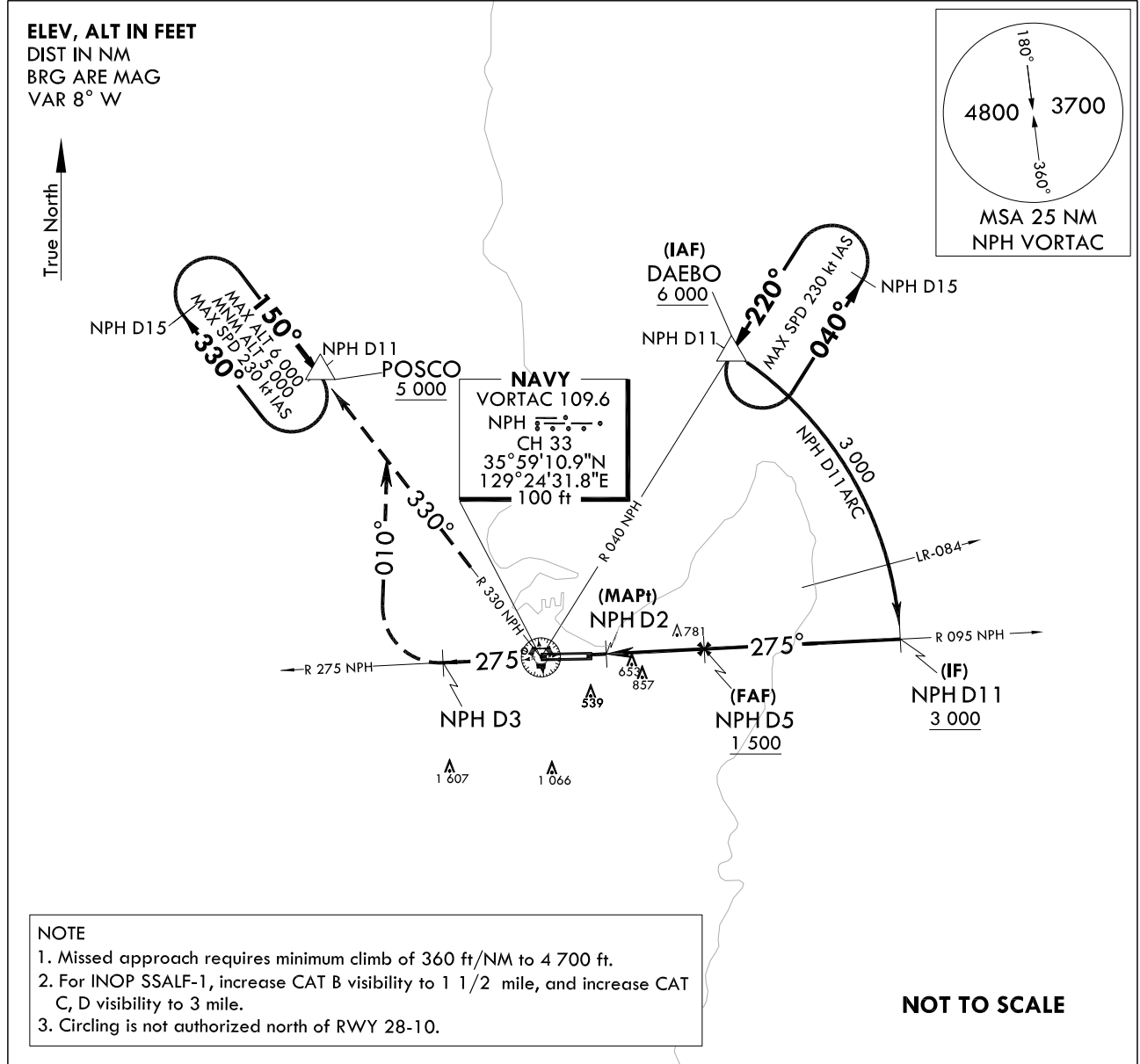
**INSTRUMENT
APPROACH
CHART**

AERODROME ELVE 76 ft
HEIGHTS RELATED TO
THR RWY 28 - ELEV 62 ft
HIGHEST ELEV TDZ 70 ft

POHANG APP	124.25	120.2
	232.4	
POHANG TWR	118.05	236.6
	308.50	

POHANG/Pohang Gyeongju(RKTH)
VOR/DME or TACAN
RWY 28

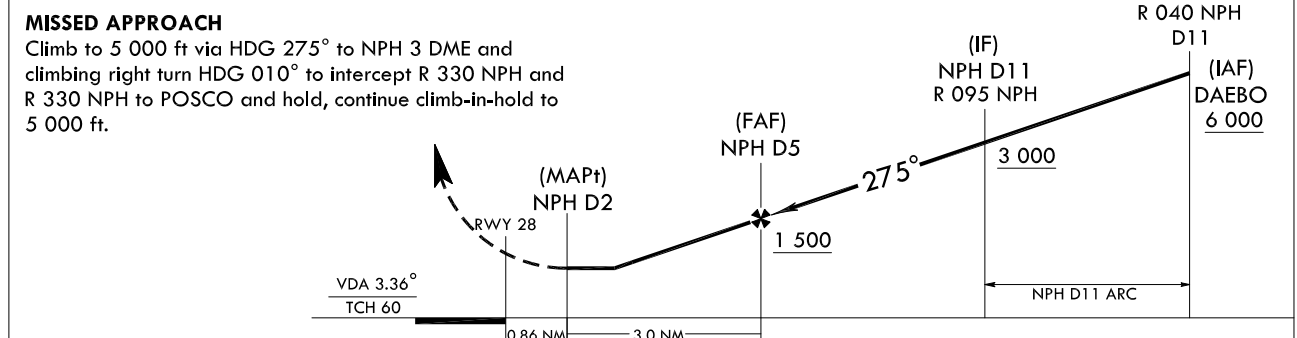
Note : Approach and circle-to-land under U.S TERPS.



NOTE
1. Missed approach requires minimum climb of 360 ft/NM to 4 700 ft.
2. For INOP SSALF-1, increase CAT B visibility to 1 1/2 mile, and increase CAT C, D visibility to 3 mile.
3. Circling is not authorized north of RWY 28-10.

NOT TO SCALE

6 000 HDG 275°	NHP D3	HDG 010°	R 330 NPH	POSCO	TRANSITION ALT 14 000 TRANSITION LVL FL 140	NOTE : VGSI and RNAV glidepath not coincident. (VGSI Angle 3.5° TCH 94)
----------------------	-----------	-------------	--------------	-------	--	--



CATEGORY	A	B	C	D
S-VORTAC 28	1 120 - 1 1 050(1 100 - 1)	1 120 - 1 1/4 1 050(1 100 - 1 1/4)	1 120 - 2 1/2	1 050(1 100 - 2 1/2)
CIRCLING	1 120 - 1 1/4 1 044(1 100 - 1 1/4)	1 120 - 1 1/2 1 044(1 100 - 1 1/2)	1 160 - 3 1 084(1 100 - 3)	1 440 - 3 1 364(1 400 - 3)

Change : Information of aerodrome name(Pohang → Pohang Gyeongju).

INTENTIONALLY

LEFT

BLANK

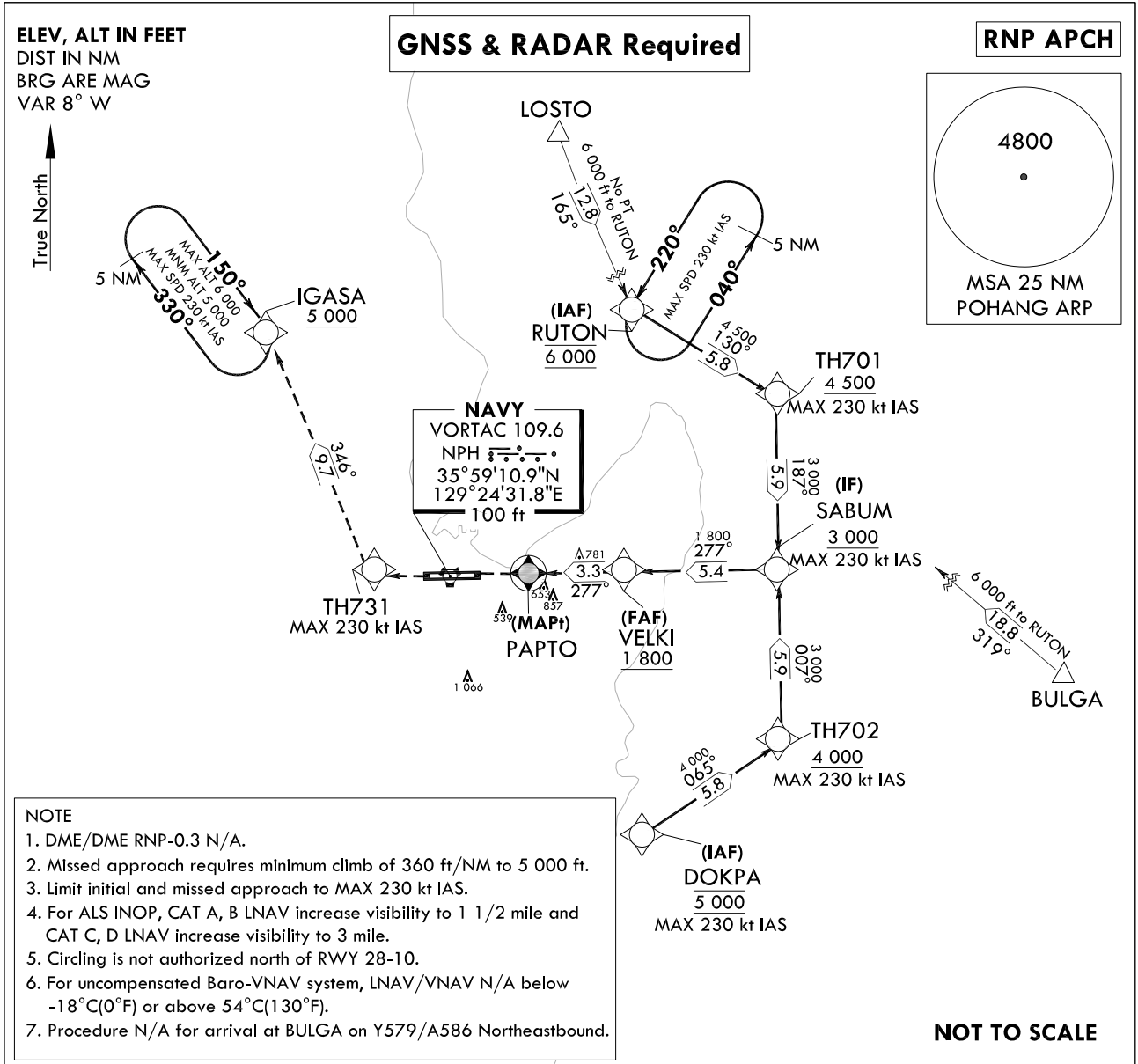
**INSTRUMENT
APPROACH
CHART**

AERODROME ELVE 76 ft
HEIGHTS RELATED TO
THR RWY 28 - ELEV 62 ft
HIGHEST ELEV TDZ 70 ft

POHANG APP	124.25	120.2
	232.4	
POHANG TWR	118.05	236.6
	308.50	

POHANG/Pohang Gyeongju(RKTH)
RNP Y RWY 28

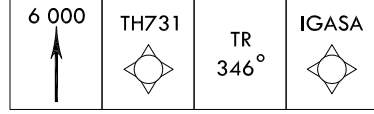
Note : Approach under U.S TERPS.



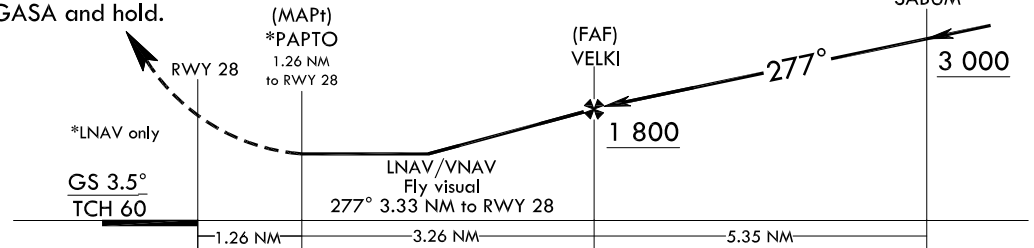
- NOTE**
1. DME/DME RNP-0.3 N/A.
 2. Missed approach requires minimum climb of 360 ft/NM to 5 000 ft.
 3. Limit initial and missed approach to MAX 230 kt IAS.
 4. For ALS INOP, CAT A, B LNAV increase visibility to 1 1/2 mile and CAT C, D LNAV increase visibility to 3 mile.
 5. Circling is not authorized north of RWY 28-10.
 6. For uncompensated Baro-VNAV system, LNAV/VNAV N/A below -18°C(0°F) or above 54°C(130°F).
 7. Procedure N/A for arrival at BULGA on Y579/A586 Northeastbound.

TRANSITION ALT 14 000
TRANSITION LVL FL 140

NOTE
VGSI and RNAV glidepath not coincident.
(VGSI Angle 3.5° TCH 94)



MISSED APPROACH
Climb to 5 000 ft via direct to TH731 and track 346° to IGASA and hold.



CATEGORY	A	B	C	D
LNAV/VNAV DA	1 360 - 3 1 290(1 300-3)			
LNAV MDA	1 120 - 1 1/4 1 050(1 100 - 1 1/4)		1 120 - 2 1/2 1 050(1 100 - 2 1/2)	
CIRCLING	1 120 - 1 1/2 1 044(1 100 - 1 1/2)		1 160 - 3 1 084(1 100 - 3) 1 440 - 3 1 364(1 400 - 3)	

Change : Information of aerodrome name(Pohang → Pohang Gyeongju).

**POHANG/Pohang Gyeongju(RKTH)
RNP Y RWY 28**

AERONAUTICAL DATA TABULATION

Instrument Approach Procedure Coding Tables

Feeder Route - via LOSTO to RUTON(IAF)

Serial Number	Path Descriptor	Waypoint Identifier	Fly-over	Course/Track °M(°T)	Distance (NM)	Turn direction	Altitude (ft)	Speed (kt)	Coordinates	VPA/TCH	Navigation specification	Remarks
001	-	LOSTO	-	-	-	-	-	-	36°20'15.8"N 129°25'48.3"E	-	RNAV 1	-
002	TF	RUTON	-	165(157.3)	12.8	-	@6 000	-230	36°08'26.0"N 129°31'55.0"E	-	RNAV 1	IAF

Feeder Route - via BULGA to RUTON(IAF)

Serial Number	Path Descriptor	Waypoint Identifier	Fly-over	Course/Track °M(°T)	Distance (NM)	Turn direction	Altitude (ft)	Speed (kt)	Coordinates	VPA/TCH	Navigation specification	Remarks
001	-	BULGA	-	-	-	-	-	-	35°56'08.6"N 129°49'24.4"E	-	RNAV 1	-
002	TF	RUTON	-	319(311.0)	18.8	-	@6 000	-230	36°08'26.0"N 129°31'55.0"E	-	RNAV 1	IAF

RNP Y RWY 28 - via RUTON to SABUM(IF)

Serial Number	Path Descriptor	Waypoint Identifier	Fly-over	Course/Track °M(°T)	Distance (NM)	Turn direction	Altitude (ft)	Speed (kt)	Coordinates	VPA/TCH	Navigation specification	Remarks
001	-	RUTON	-	-	-	-	@6 000	-230	36°08'26.0"N 129°31'55.0"E	-	RNP APCH	IAF Bank Angle 23°
002	TF	TH701	-	130(122.1)	5.8	-	+4 500	-230	36°05'19.8"N 129°38'00.3"E	-	RNP APCH	Bank Angle 23°
003	TF	SABUM	-	187(179.4)	5.9	-	+3 000	-230	35°59'24.2"N 129°38'05.2"E	-	RNP APCH	IF Bank Angle 23°

RNP Y RWY 28 - via DOKPA to SABUM(IF)

Serial Number	Path Descriptor	Waypoint Identifier	Fly-over	Course/Track °M(°T)	Distance (NM)	Turn direction	Altitude (ft)	Speed (kt)	Coordinates	VPA/TCH	Navigation specification	Remarks
001	-	DOKPA	-	-	-	-	@5 000	-230	35°50'15.6"N 129°32'11.3"E	-	RNP APCH	IAF Bank Angle 23°
002	TF	TH702	-	065(056.5)	5.8	-	+4 000	-230	35°53'28.7"N 129°38'10.1"E	-	RNP APCH	Bank Angle 23°
003	TF	SABUM	-	007(359.4)	5.9	-	+3 000	-230	35°59'24.2"N 129°38'05.2"E	-	RNP APCH	IF Bank Angle 23°

Change : Information of aerodrome name(Pohang → Pohang Gyeongju).

**POHANG/Pohang Gyeongju(RKTH)
RNP Y RWY 28**

AERONAUTICAL DATA TABULATION

Instrument Approach Procedure Coding Tables

RNP Y RWY 28 - via SABUM to MAPT

Serial Number	Path Descriptor	Waypoint Identifier	Fly-over	Course/Track °M(°T)	Distance (NM)	Turn direction	Altitude (ft)	Speed (kt)	Coordinates	VPA/TCH	Navigation specification	Remarks
001	TF	SABUM	-	-	-	-	+3 000	-230	35°59'24.2"N 129°38'05.2"E	-	RNP APCH	FAF Bank Angle 23°
002	TF	VELKI	-	277(269.4)	5.4	-	+1 800	-	35°59'20.5"N 129°31'29.9"E	-	RNP APCH	(LNAV only)
003	TF	PAPTO	Y	277(269.3)	3.3	-	+1 120	-	35°59'18.0"N 129°27'29.1"E	-	RNP APCH	MAP(LNAV only)
004	DF	TH731	-	-	-	-	-	-230	35°59'13.7"N 129°20'49.9"E	-	RNAV 1	CG 360 ft/NM to 5 000 ft
005	TF	IGASA	-	346(337.6)	9.7	-	+5 000	-230	36°08'10.4"N 129°16'16.6"E	-	RNAV 1	-
006	TF	IGASA	-	330	-	R	-6 000 +5 000	-230	36°08'10.4"N 129°16'16.6"E	-	RNAV 1	-

HOLDING PROCEDURE

Holding Identification	Path Descriptor	Waypoint Identifier	Fly-over	Course/Track °M(°T)	Distance (NM)	Turn direction	Altitude (ft)	Speed (kt)	Coordinates	VPA/TCH	Navigation specification	Remarks
RNP Y RWY 28	HM	IGASA	-	150	5	R	-6 000 +5 000	-230	36°07'58.0"N 129°16'20.0"E	-	RNAV 1	Inbound Leg
	HM	RUTON	-	220	5	L	@6 000	-230	36°08'26.0"N 129°31'55.0"E	-	RNAV 1	Inbound Leg

Change : Information of aerodrome name(Pohang → Pohang Gyeongju).

INTENTIONALLY

LEFT

BLANK

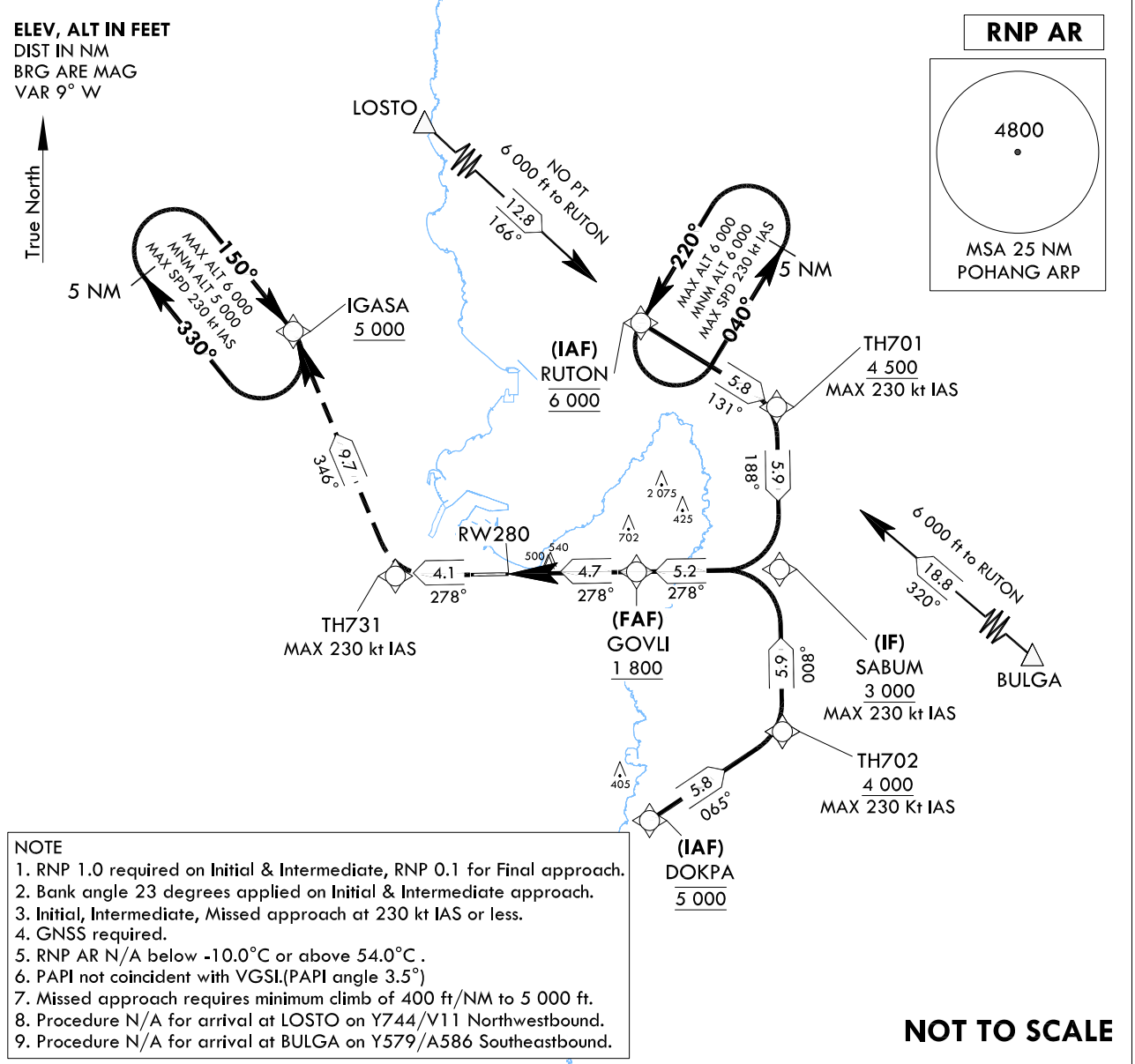
**INSTRUMENT
APPROACH
CHART**

AERODROME ELVE 76 ft
HEIGHTS RELATED TO
THR RWY 28 - ELEV 62 ft
HIGHEST ELEV TDZ 70 ft

POHANG APP	124.25	120.2
	232.4	
POHANG TWR	118.05	236.6
	308.50	

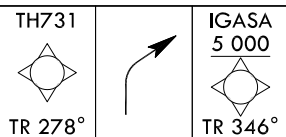
POHANG/Pohang Gyeongju(RKTH)
RNP Z RWY 28(AR)

Note : Approach under U.S TERPS.



- NOTE**
- RNP 1.0 required on Initial & Intermediate, RNP 0.1 for Final approach.
 - Bank angle 23 degrees applied on Initial & Intermediate approach.
 - Initial, Intermediate, Missed approach at 230 kt IAS or less.
 - GNSS required.
 - RNP AR N/A below -10.0°C or above 54.0°C.
 - PAPI not coincident with VGSI.(PAPI angle 3.5°)
 - Missed approach requires minimum climb of 400 ft/NM to 5 000 ft.
 - Procedure N/A for arrival at LOSTO on Y744/V11 Northwestbound.
 - Procedure N/A for arrival at BULGA on Y579/A586 Southeastbound.

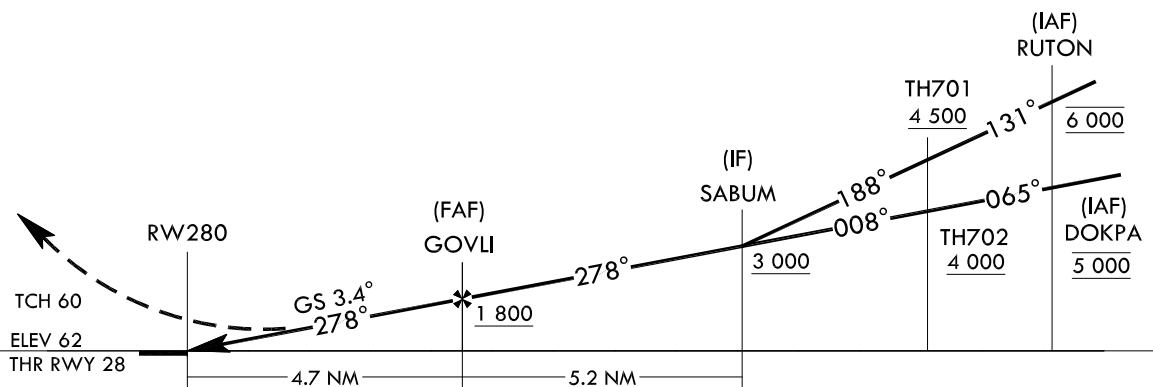
NOT TO SCALE



TRANSITION ALT 14 000
TRANSITION LVL FL 140

MISSED APPROACH

Climb to 5 000 ft via on track 278° to TH731, then track 346° to IGASA and hold.



CATEGORY		A	B	C	D
RNP 0.1	FULL	786-1 3/4 716(800-1 3/4)			N/A
	ALS INOP	786-2 716(800-2)			N/A

Change : Establishment of fly-over point(RW280).

POHANG/Pohang Gyeongju(RKTH)
RNP Z RWY 28(AR)

AERONAUTICAL DATA TABULATION

Instrument Approach Procedure Coding Tables

Feeder Route - via LOSTO to RUTON(IAF)

Serial Number	Path Descriptor	Waypoint Identifier	Fly-over	Course/Track °M(°T)	Distance (NM)	Turn direction	Altitude (ft)	Speed (kt)	Coordinates	VPA/ TCH	Navigation specification	Remarks
001	TF	LOSTO	-	-	-	-	-	-	36°20'15.8"N 129°25'48.3"E	-	RNAV 1	FEEDER ROUTE
002	HM	RUTON	-	166(157.3)	12.8	-	@6 000	-230	36°08'26.0"N 129°31'55.0"E	-	RNP 1	HOLDING 5 NM LEG

Feeder Route - via BULGA to RUTON(IAF)

Serial Number	Path Descriptor	Waypoint Identifier	Fly-over	Course/Track °M(°T)	Distance (NM)	Turn direction	Altitude (ft)	Speed (kt)	Coordinates	VPA/ TCH	Navigation specification	Remarks
001	TF	BULGA	-	-	-	-	-	-	35°56'08.6"N 129°49'24.4"E	-	RNAV 1	FEEDER ROUTE
002	HM	RUTON	-	320(311.0)	18.8	-	@6 000	-230	36°08'26.0"N 129°31'55.0"E	-	RNP 1	HOLDING 5 NM LEG

RNP Z RWY 28(AR) - via RUTON to SABUM(IF)

Serial Number	Path Descriptor	Waypoint Identifier	Fly-over	Course/Track °M(°T)	Distance (NM)	Turn direction	Altitude (ft)	Speed (kt)	Coordinates	VPA/ TCH	Navigation specification	Remarks
001	IF	RUTON	-	-	-	-	@6 000	-230	36°08'26.0"N 129°31'55.0"E	-	RNP 1	IAF Bank angle 23°
002	TF	TH701	-	131(122.1)	5.8	-	+4 500	-230	36°05'19.8"N 129°38'00.3"E	-	RNP 1	Bank angle 23°
003	TF	SABUM	-	188(179.4)	5.9	-	+3 000	-230	35°59'24.2"N 129°38'05.2"E	-	RNP 1	IF Bank angle 23°

RNP Z RWY 28(AR) - via DOKPA to SABUM(IF)

Serial Number	Path Descriptor	Waypoint Identifier	Fly-over	Course/Track °M(°T)	Distance (NM)	Turn direction	Altitude (ft)	Speed (kt)	Coordinates	VPA/ TCH	Navigation specification	Remarks
001	IF	DOKPA	-	-	-	-	@5 000	-230	35°50'15.6"N 129°32'11.3"E	-	RNP 1	IAF Bank angle 23°
002	TF	TH702	-	065(056.5)	5.8	-	+4 000	-230	35°55'28.7"N 129°38'10.1"E	-	RNP 1	Bank angle 23°
003	TF	SABUM	-	008(359.4)	5.9	-	+3 000	-230	35°59'24.2"N 129°38'05.2"E	-	RNP 1	IF Bank angle 23°

POHANG/Pohang Gyeongju(RKTH)
RNP Z RWY 28(AR)

AERONAUTICAL DATA TABULATION

Instrument Approach Procedure Coding Tables

RNP Z RWY 28(AR) - via SABUM to IGASA

Serial Number	Path Descriptor	Waypoint Identifier	Fly-over	Course/Track °M(°T)	Distance (NM)	Turn direction	Altitude (ft)	Speed (kt)	Coordinates	VPA/ TCH	Navigation specification	Remarks
001	TF	SABUM	-	-	-	-	+3 000	-230	35°59'24.2"N 129°38'05.2"E	-	RNP 1	IF Bank angle 23°
002	TF	GOVLI	-	278(269.4)	5.2	-	+1 800	-	35°59'20.6"N 129°31'39.8"E	-	RNP 0.1	FAF
003	TF	RW280	Y	278(269.3)	4.7	-	-	-	35°59'17.04"N 129°25'55.91"E	3.4/60	RNP 0.1	-
004	TF	TH731	-	278(269.2)	4.1	-	-	-230	35°59'13.7"N 129°20'49.9"E	-	RNP 1	-
005	TF	IGASA	-	346(337.5)	9.7	-	+5 000	-230	36°08'10.4"N 129°16'16.6"E	-	RNP 1	-
006	HM	IGASA	-	150(141.5)	-	R	-6 000 +5 000	-230	36°08'10.4"N 129°16'16.6"E	-	RNP 1	HOLDING 5 NM LEG

Change : Withdrawal of speed restriction for GOVLI and RW280.

INTENTIONALLY

LEFT

BLANK